



BOVA

VENTURE WEAR

FRONTIER

Style Code: 30456 | Colours: Taupe | Size Range: 5 - 12

Reinforced wax laces for a secure lacing system

Premium, industrial strength stitching that exceeds industry standards

Stitched down construction with enhanced slip resistance

Flexible sole construction

Reinforced foam padding on collar & tongue for optimal cushioning & comfort

Soft, premium Nappa leather lining & tongue

2 pair ski hooks and 4 pairs non-corrosive D-rings

2.0 - 2.2mm Smooth Duo-tone Genuine leather upper

Shank transition bridge for additional stability & support

Antimicrobial treated linings & footbed

CLEAT SOLE

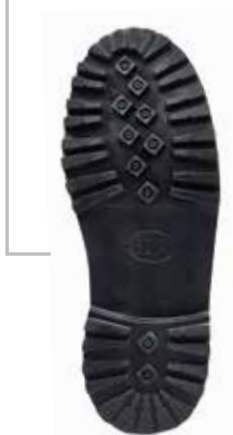
Heavy-duty traction, resoleable design & lasting performance

- ✓ Deep-lug tread for maximum traction on rugged, uneven terrain
- ✓ Durable rubber for long-lasting wear & stability
- ✓ Wider toe box for natural foot movement & comfort
- ✓ Resoleable design for sustainability & extended life

Ideal environments: Agriculture, conservation, hiking and outdoor work

FOOTBED

- ✓ High-quality PU/microfibre with antimicrobial treatment
- ✓ Anatomical arch support
- ✓ Honeycomb bottom pattern construction
- ✓ Aerated channels in the forepart



ALL COMPONENTS AND MATERIALS ARE SOURCED AND MANUFACTURED IN SOUTH AFRICA

This product is manufactured in South Africa in an ISO9001 accredited factory
September 2025

